

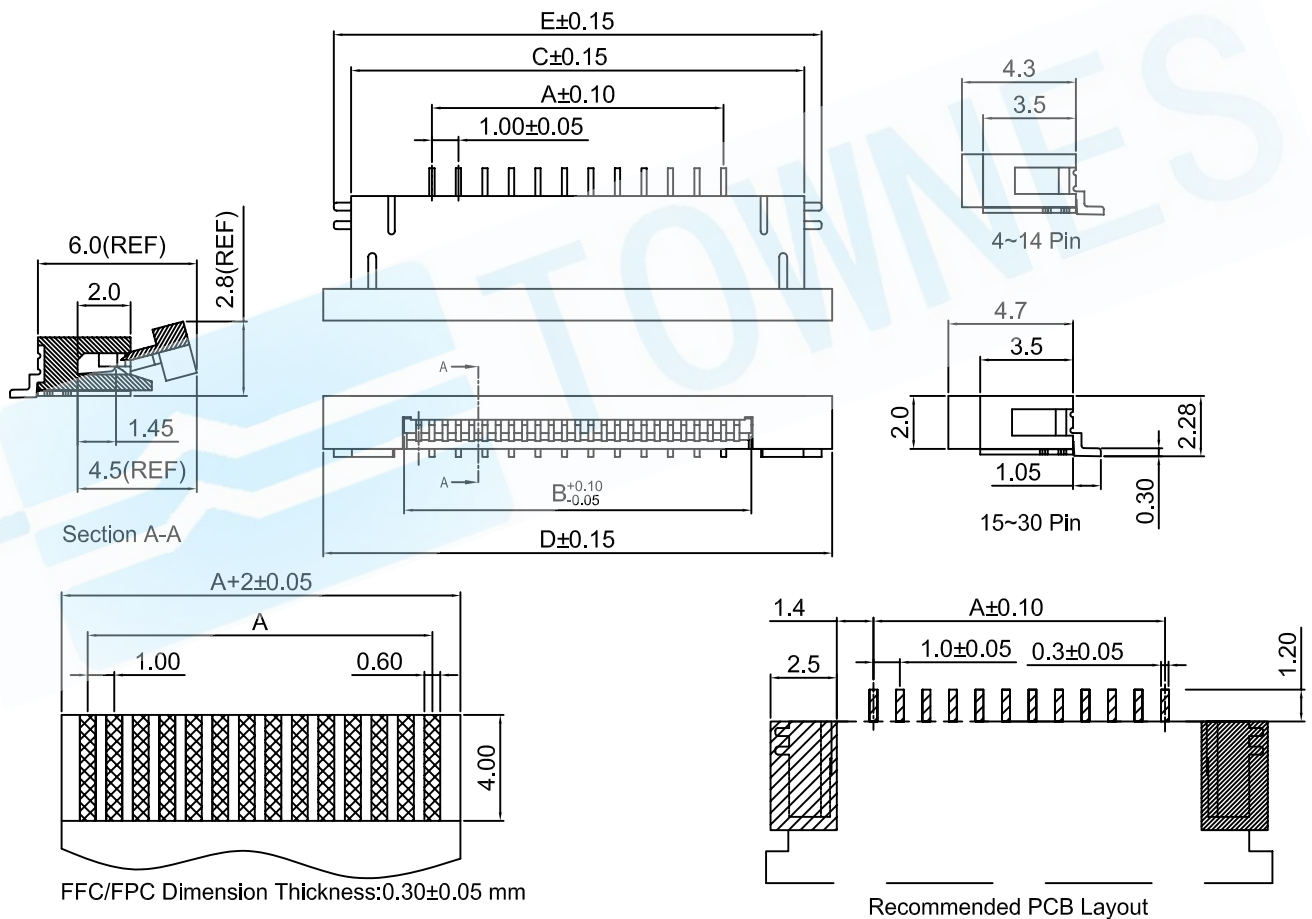
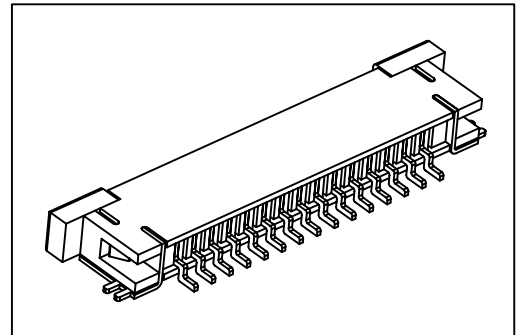
0.004"(1.0mm)FPC/FFC Pitch Connector

ZIF HORIZONTAL SMT TYPE

BODY HEIGHT 2.0mm

Specifications:

Current Rating	: 0.5 Amp
Voltage Rating	: 100V AC/DC
Contact resistance	: 30m Ohm Max
Insulator resistance	: 1000M ohm min.
Withstanding Voltage	: 250V AC/Minute
Operating Temperature Range	: -20°~+85° C
Max Processing Temp	: 260° for 5 seconds
Insulator Material	: Polyester, UL 94V-0
Contact Material	: Phosphor Bronze
Contact Plated	: Tin Plated



■ DIMENSION TABLE

DIMENSION TABLE					DIMENSION TABLE					DIMENSION TABLE				
Circuits	Dimension				Circuits	Dimension				Circuits	Dimension			
	A	B	C	D		A	B	C	D		A	B	C	D
4	3.00	5.10	9.10	11.10	14	13.00	15.10	19.10	21.10	24	23.00	25.10	29.10	31.10
5	4.00	6.10	10.10	12.10	15	14.00	16.10	20.10	22.10	25	24.00	26.10	30.10	32.10
6	5.00	7.10	11.10	13.10	16	15.00	17.10	21.10	23.10	26	25.00	27.10	31.10	33.10
7	6.00	8.10	12.10	14.10	17	16.00	18.10	22.10	24.10	27	26.00	28.10	32.10	34.10
8	7.00	9.10	13.10	15.10	18	17.00	19.10	23.10	25.10	28	27.00	29.10	33.10	35.10
9	8.00	10.10	14.10	16.10	19	18.00	20.10	24.10	26.10	29	28.00	30.10	34.10	36.10
10	9.00	11.10	15.10	17.10	20	19.00	21.10	25.10	27.10	30	29.00	31.10	35.10	37.10
11	10.00	12.10	16.10	18.10	21	20.00	22.10	26.10	28.10					
12	11.00	13.10	17.10	19.10	22	21.00	23.10	27.10	29.10					
13	12.00	14.10	18.10	20.10	23	22.00	24.10	28.10	30.10					

How To Order

TFP-F6XXZH-TT1-0CX

